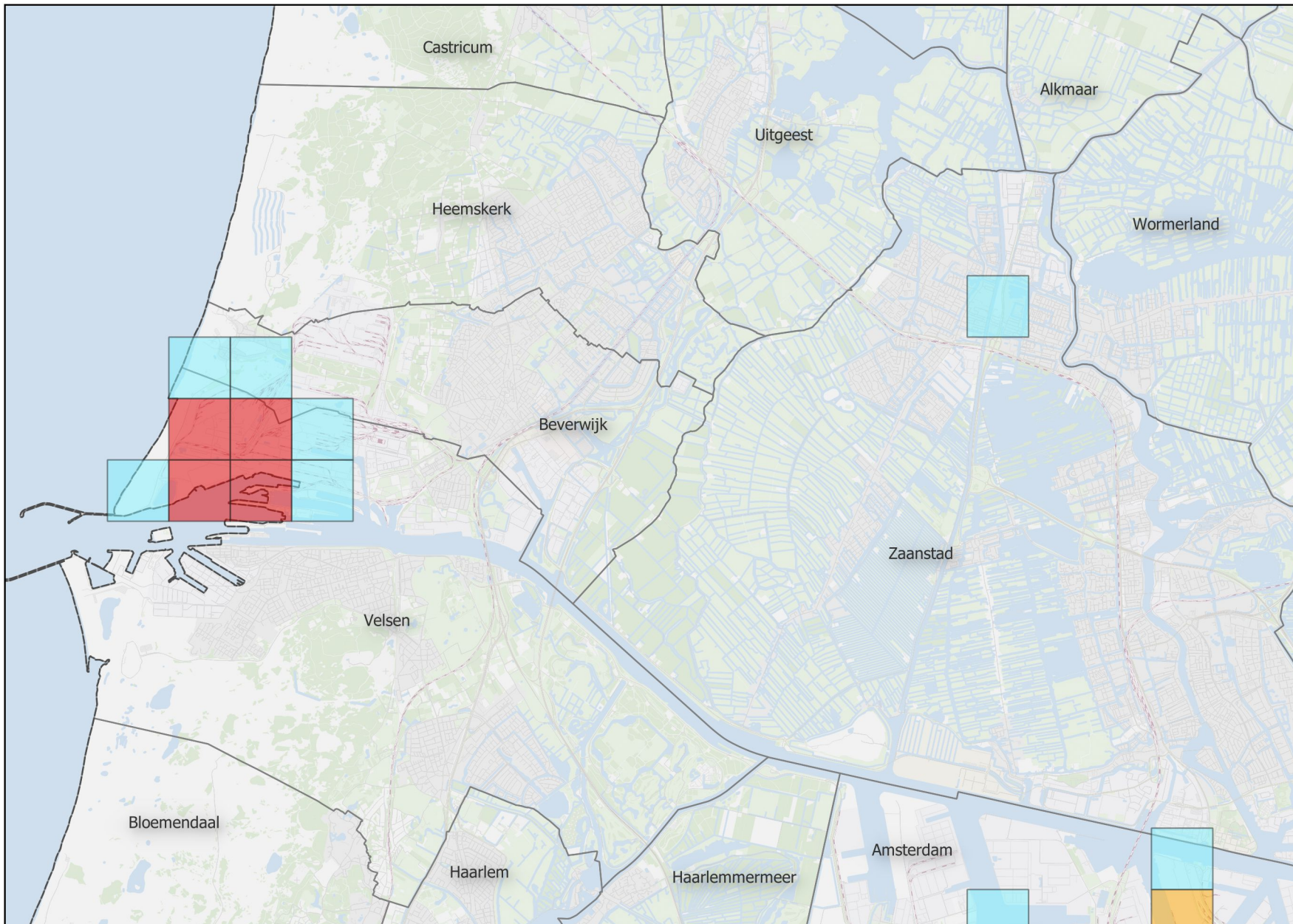


Gebieden met fijnstof PM10 concentratie hoger dan 20 µg/m³

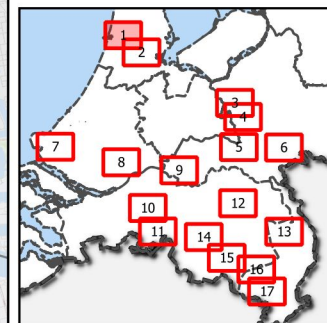
Grootschalige achtergrond concentratie (GCN) fijnstof PM10 in 2021



Legenda

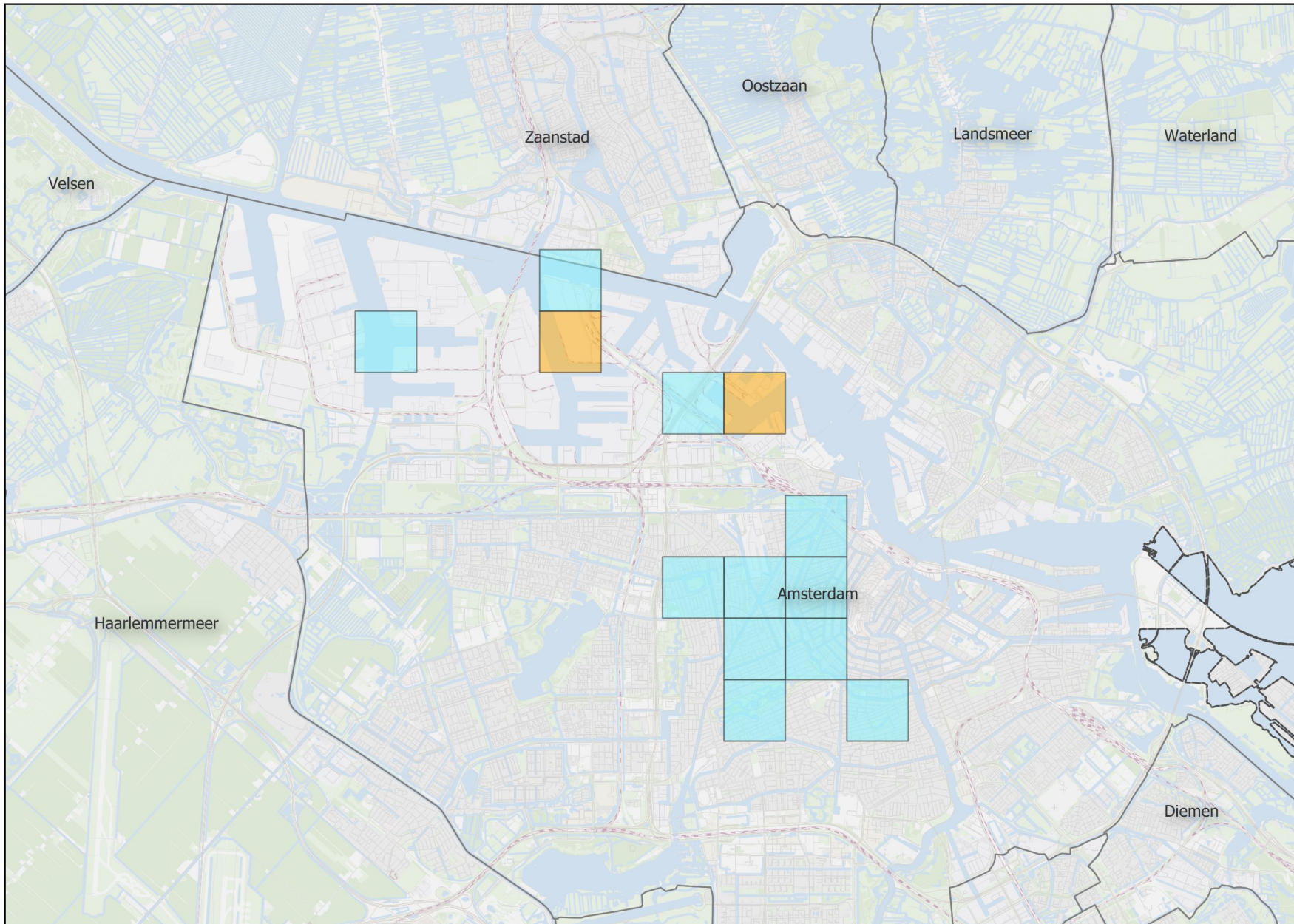
Fijnstof PM10

□	<= 20,0 µg/m ³
□	20,0 t/m 25,0 µg/m ³
□	25,0 t/m 27,0 µg/m ³
■	> 27,0 µg/m ³



Beverwijk, Velsen en Zaanstad

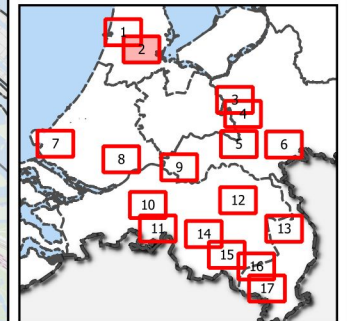
Grootschalige achtergrond concentratie (GCN) fijnstof PM10 in 2021



Legenda

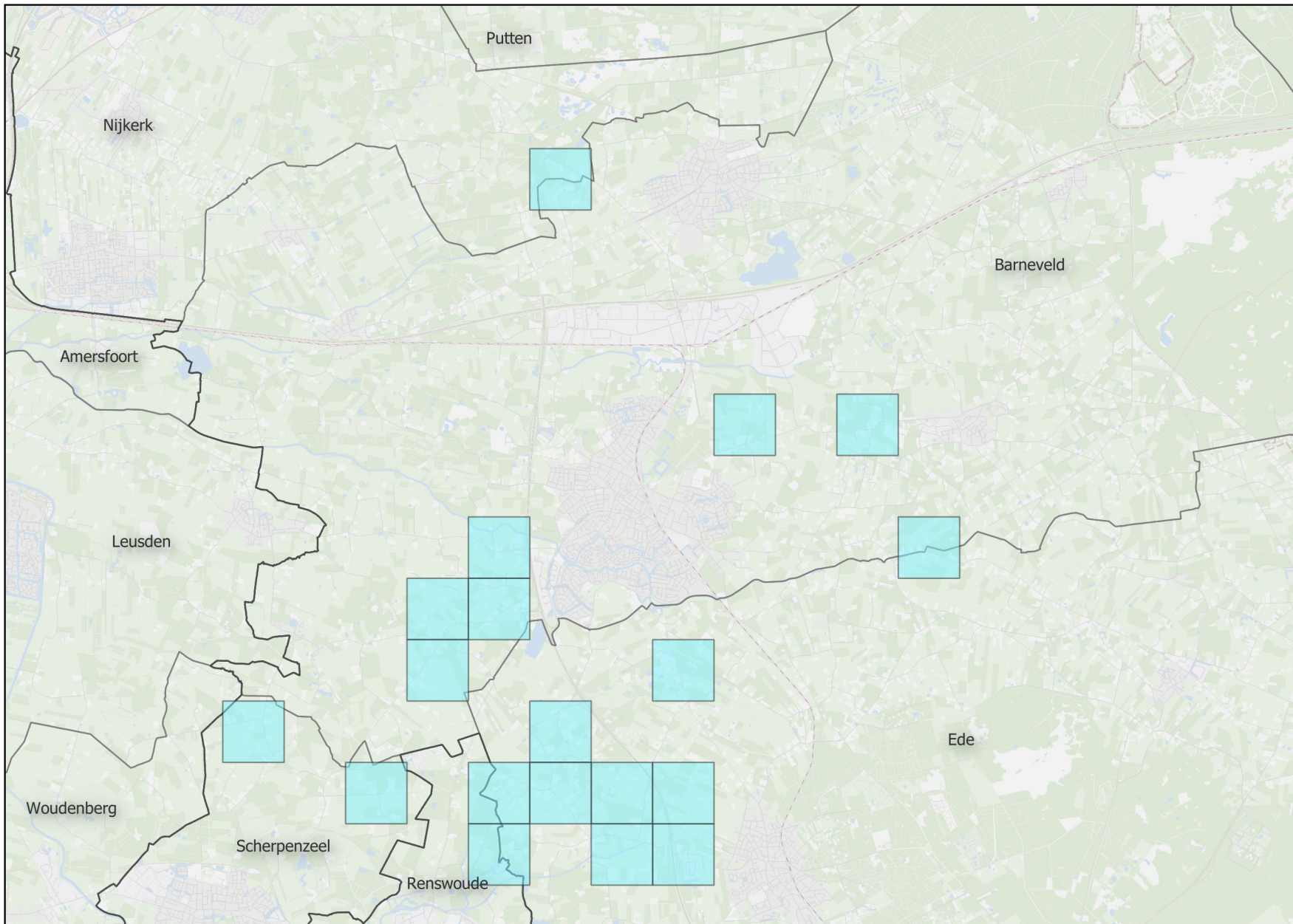
Fijnstof PM10

□	≤ 20,0 µg/m ³
■ (light blue)	20,0 t/m 25,0 µg/m ³
■ (orange)	25,0 t/m 27,0 µg/m ³
■ (red)	> 27,0 µg/m ³



Amsterdam

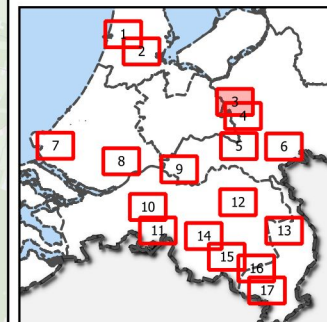
Grootschalige achtergrond concentratie (GCN) fijnstof PM10 in 2021



Legenda

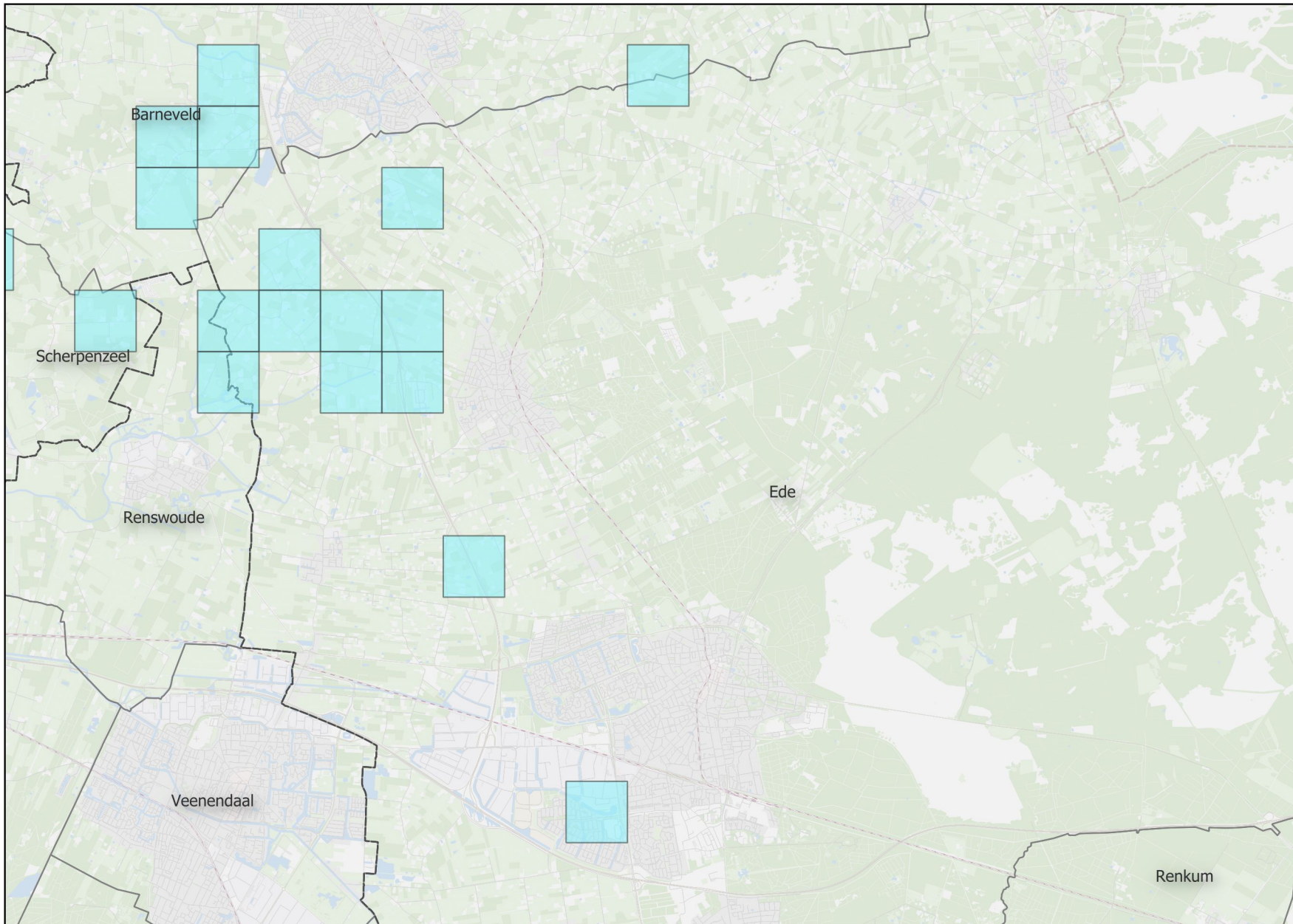
Fijnstof PM10

□	<= 20,0 µg/m ³
■	20,0 t/m 25,0 µg/m ³
■	25,0 t/m 27,0 µg/m ³
■	> 27,0 µg/m ³



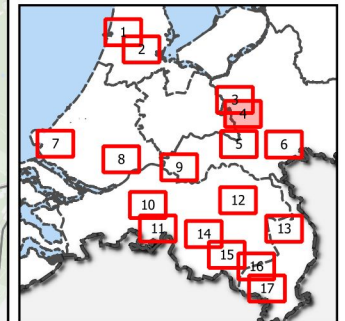
Barneveld, Scherpenzeel

Grootschalige achtergrond concentratie (GCN) fijnstof PM10 in 2021



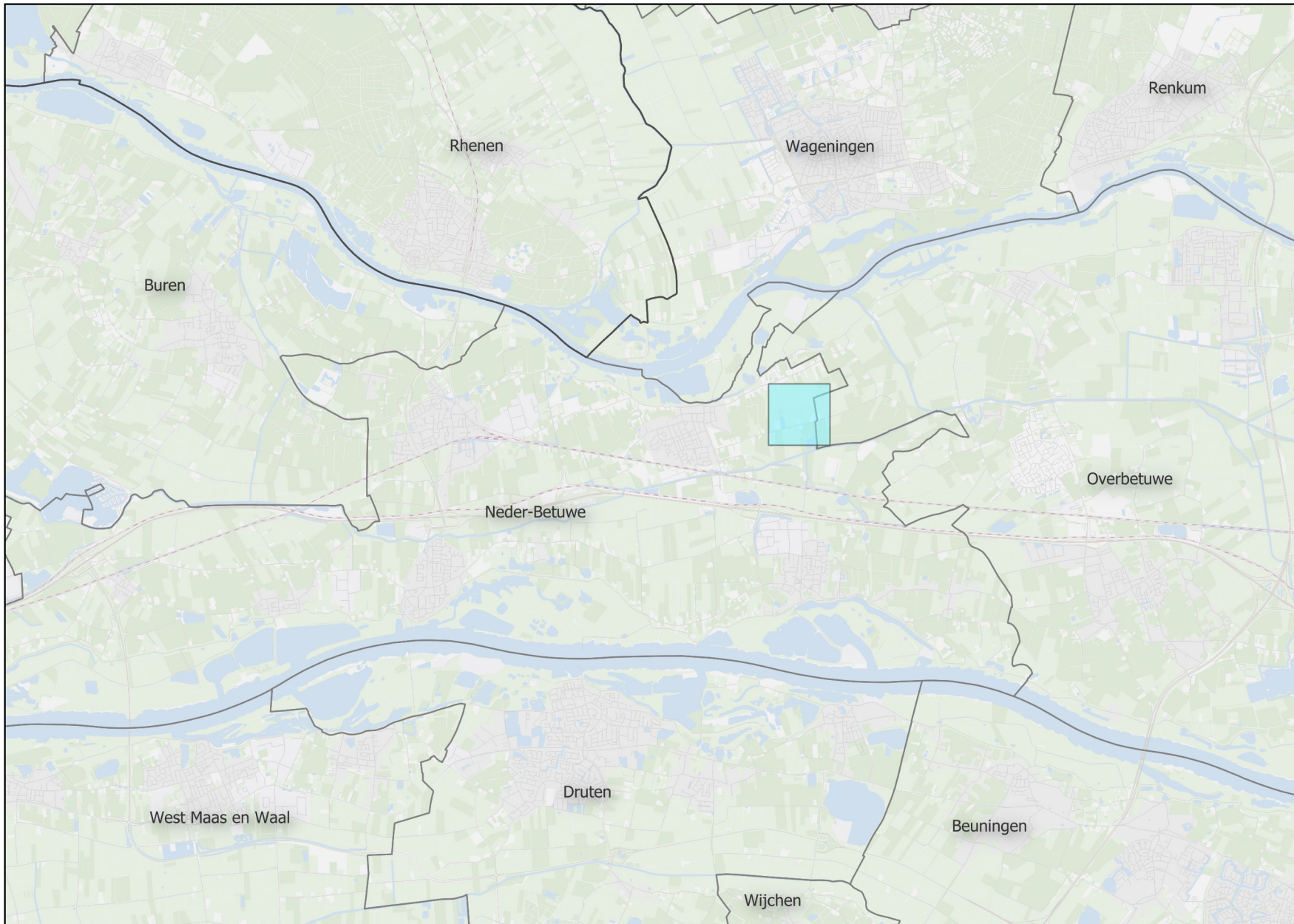
Legenda

- Fijnstof PM10
- ≤ 20,0 µg/m³
 - 20,0 t/m 25,0 µg/m³
 - 25,0 t/m 27,0 µg/m³
 - > 27,0 µg/m³



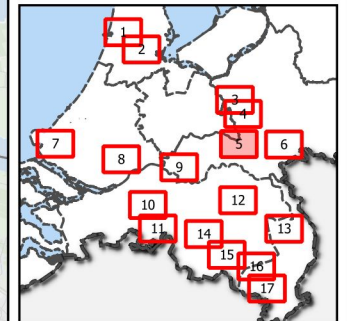
Ede

Grootschalige achtergrond concentratie (GCN) fijnstof PM10 in 2021



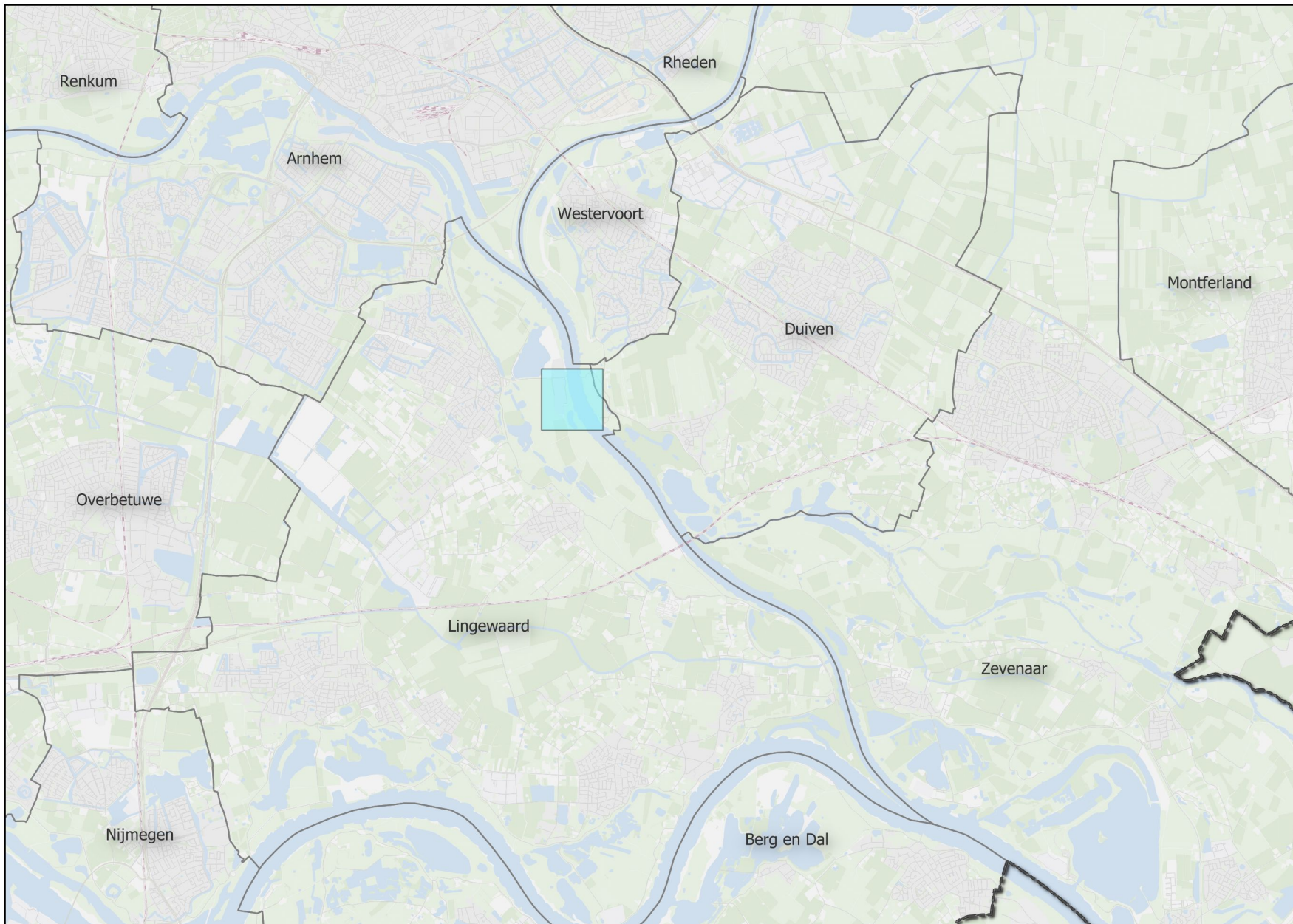
Legenda

- Fijnstof PM10
- ≤ 20,0 µg/m³
 - 20,0 t/m 25,0 µg/m³
 - 25,0 t/m 27,0 µg/m³
 - > 27,0 µg/m³



Neder-Betuwe en Overbetuwe

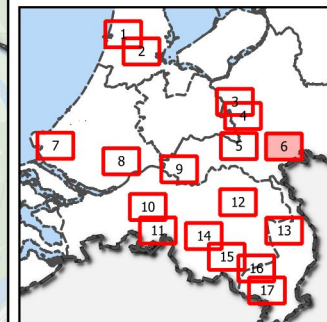
Grootschalige achtergrond concentratie (GCN) fijnstof PM10 in 2021



Legenda

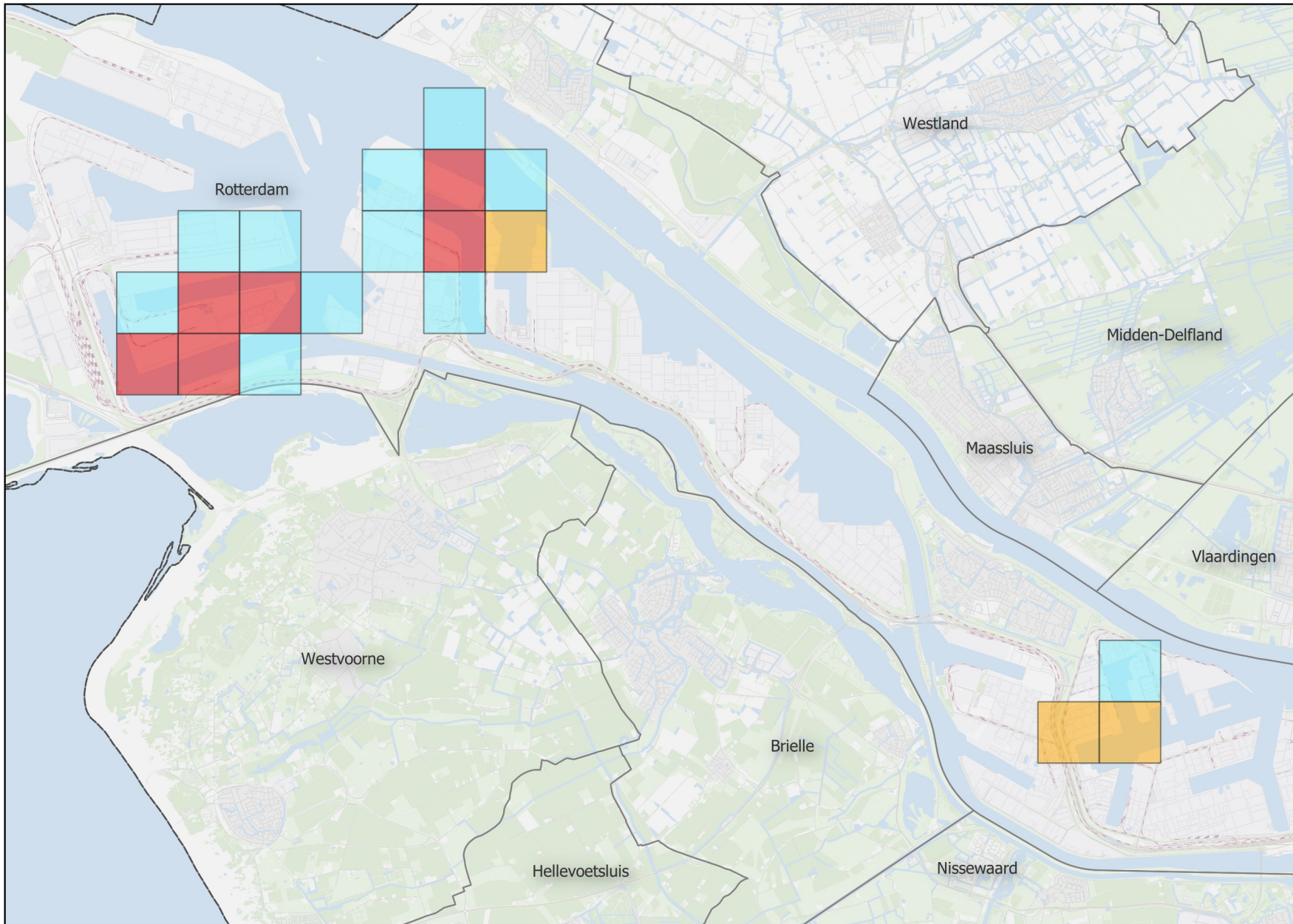
Fijnstof PM10

□	<= 20,0 µg/m ³
■	20,0 t/m 25,0 µg/m ³
■	25,0 t/m 27,0 µg/m ³
■	> 27,0 µg/m ³



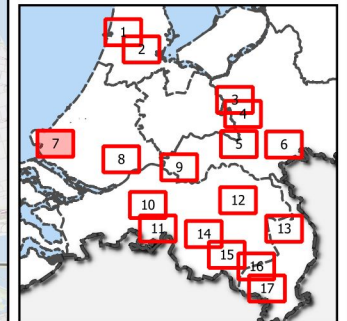
Lingewaard en Duiven

Grootschalige achtergrond concentratie (GCN) fijnstof PM10 in 2021



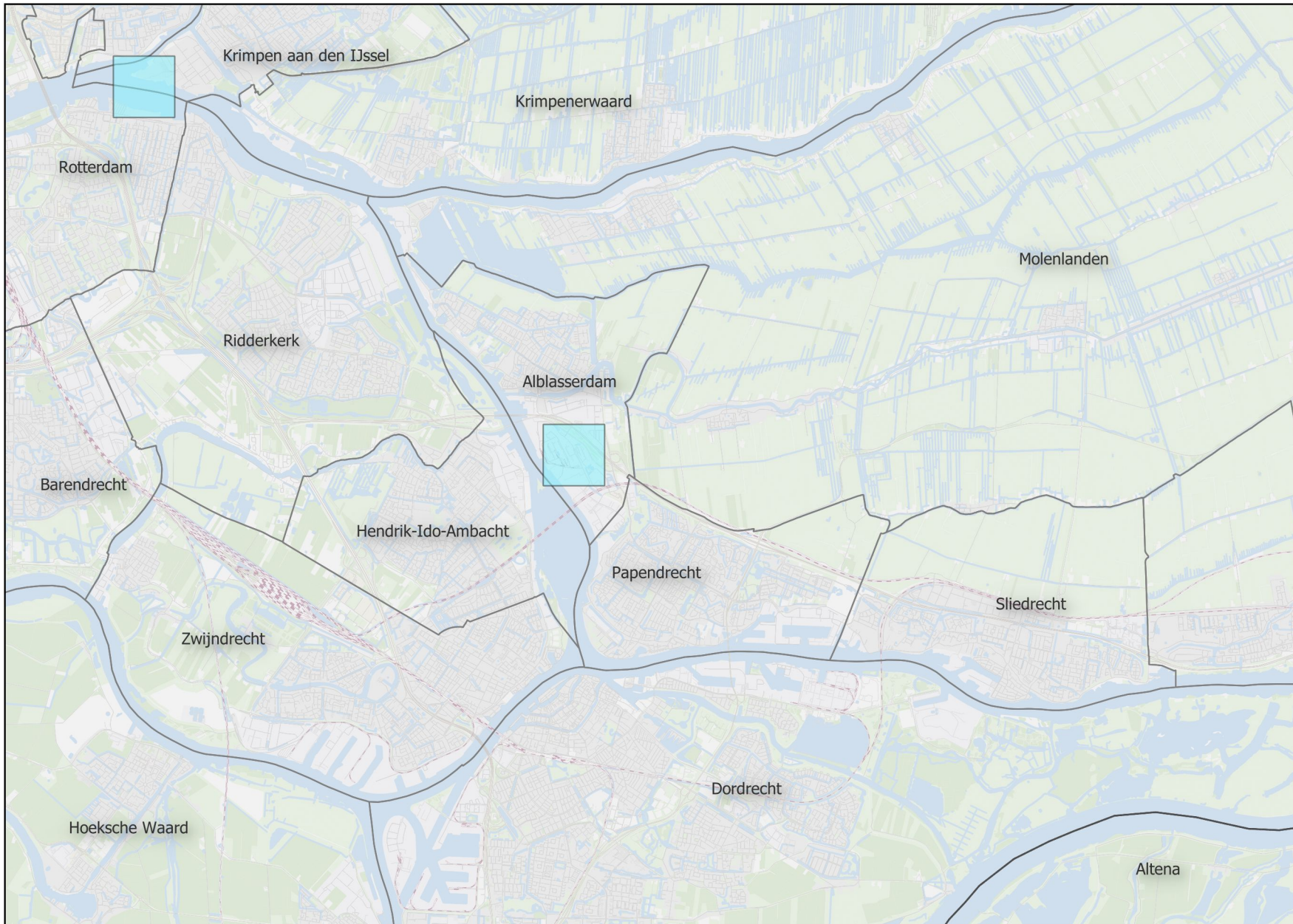
Legenda

- Fijnstof PM10
- ≤ 20,0 µg/m³
 - 20,0 t/m 25,0 µg/m³
 - 25,0 t/m 27,0 µg/m³
 - > 27,0 µg/m³



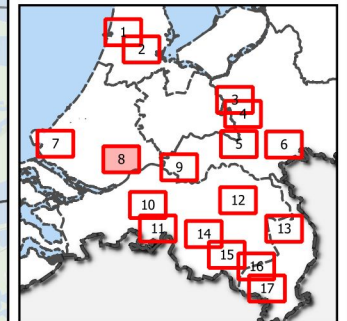
Haven Rotterdam

Grootschalige achtergrond concentratie (GCN) fijnstof PM10 in 2021



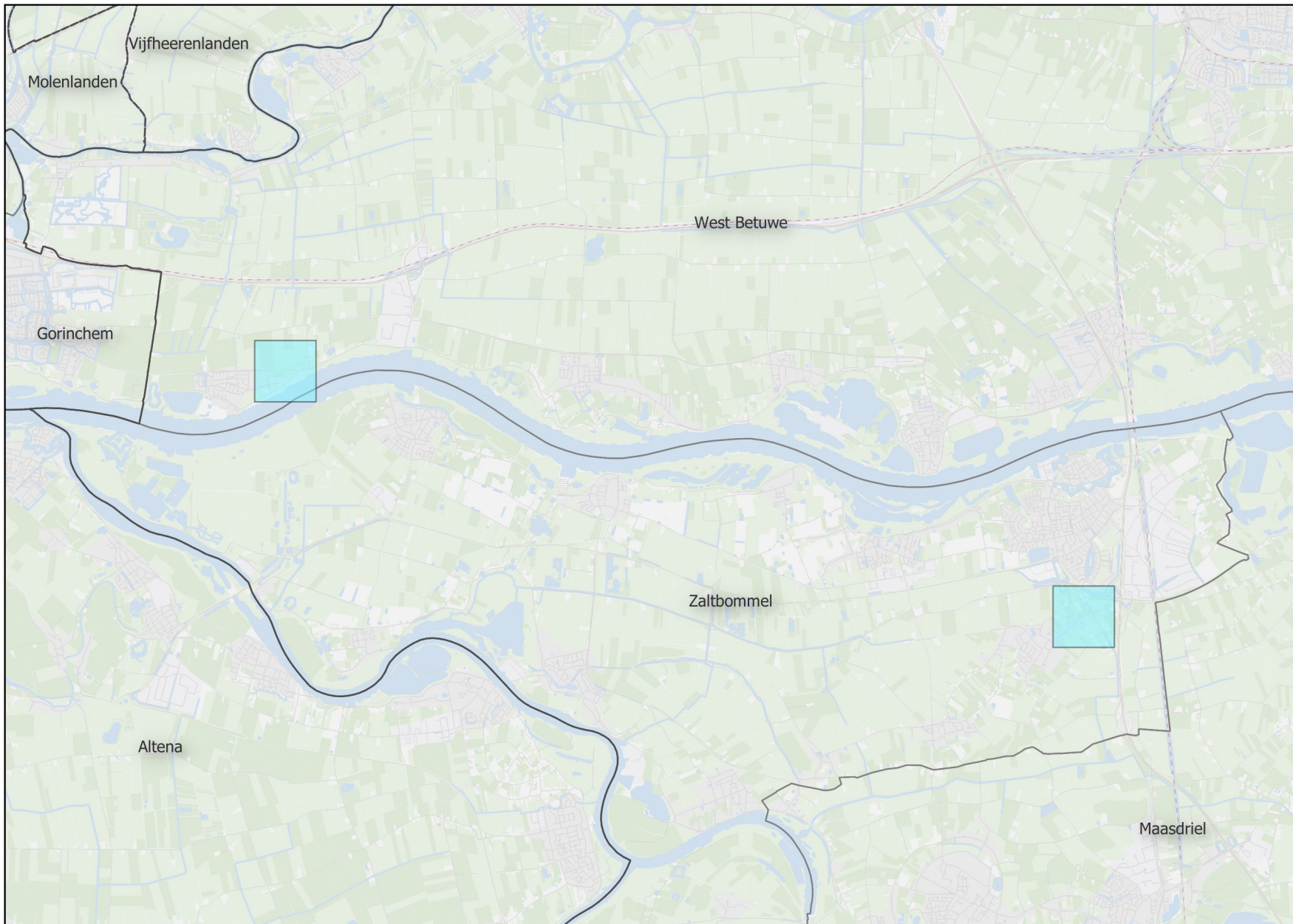
Legenda

- Fijnstof PM10
- ≤ 20,0 µg/m³
 - 20,0 t/m 25,0 µg/m³
 - 25,0 t/m 27,0 µg/m³
 - > 27,0 µg/m³



Alblasserdam en Krimpen aan den IJssel

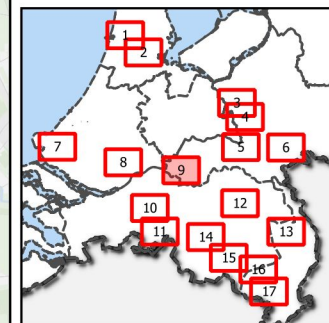
Grootschalige achtergrond concentratie (GCN) fijnstof PM10 in 2021



Legenda

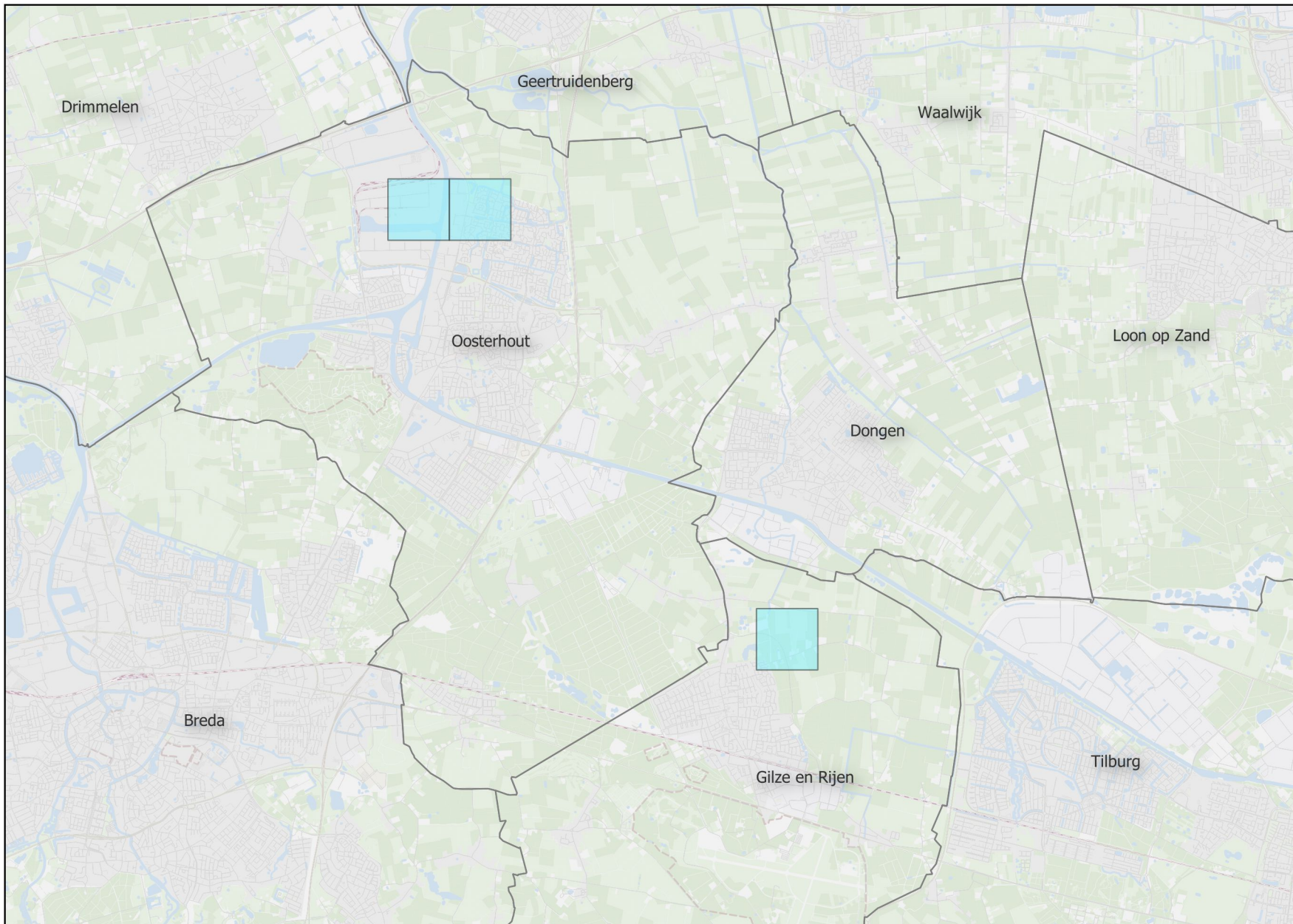
Fijnstof PM10

□	<= 20,0 µg/m ³
■	20,0 t/m 25,0 µg/m ³
■	25,0 t/m 27,0 µg/m ³
■	> 27,0 µg/m ³



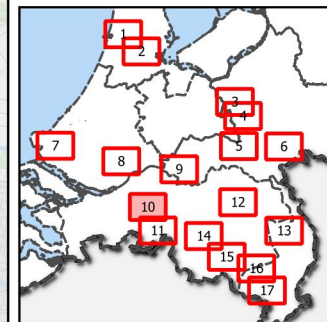
West Betuwe en Zaltbommel

Grootschalige achtergrond concentratie (GCN) fijnstof PM10 in 2021



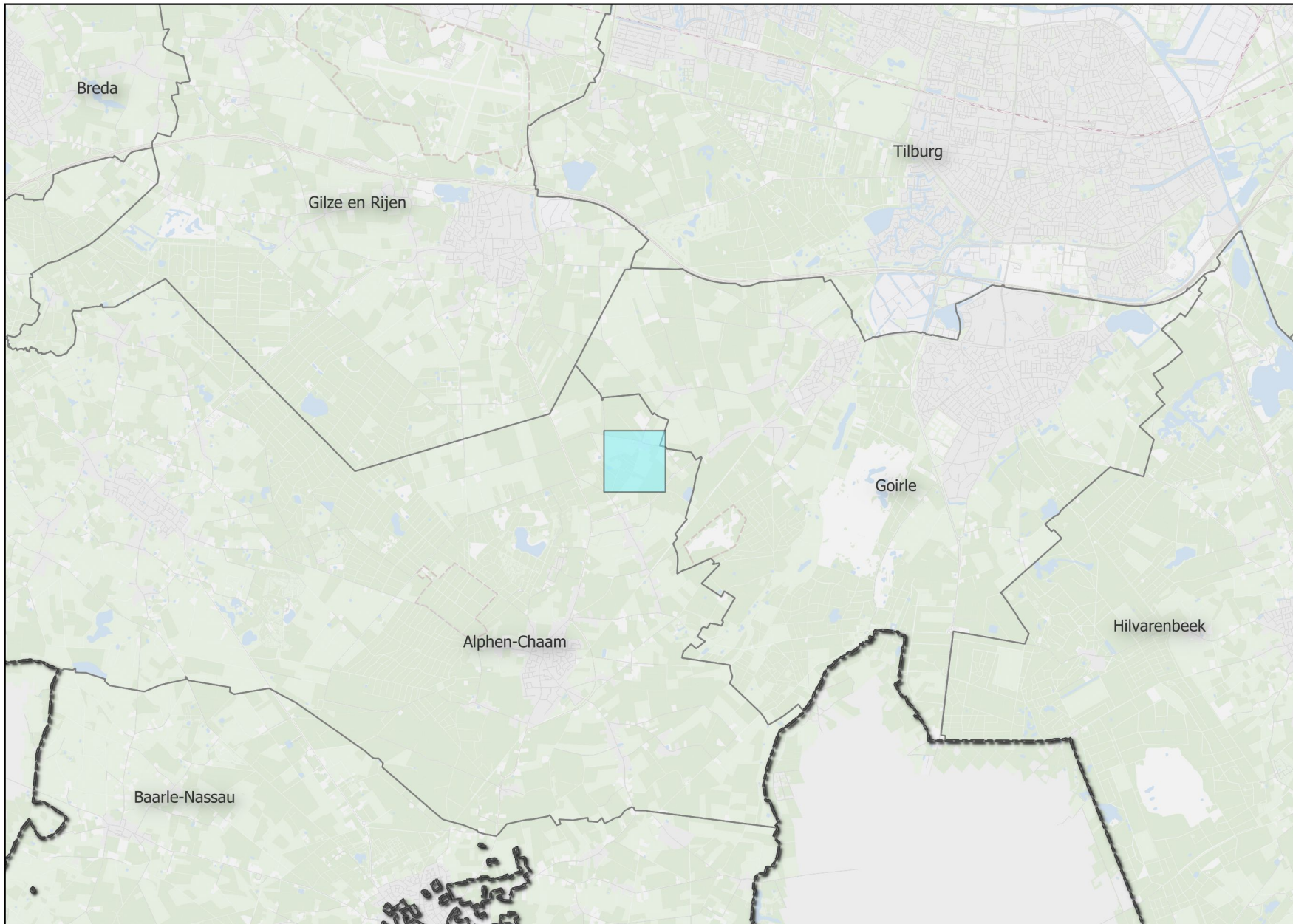
Legenda

- Fijnstof PM10
- ≤ 20,0 µg/m³
 - 20,0 t/m 25,0 µg/m³
 - 25,0 t/m 27,0 µg/m³
 - > 27,0 µg/m³



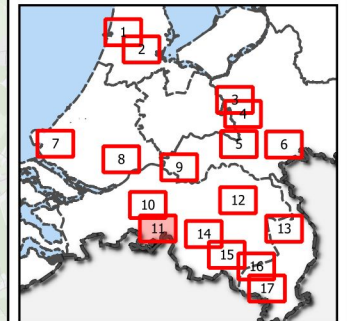
Oosterhout en Gilze en Rijen

Grootschalige achtergrond concentratie (GCN) fijnstof PM10 in 2021



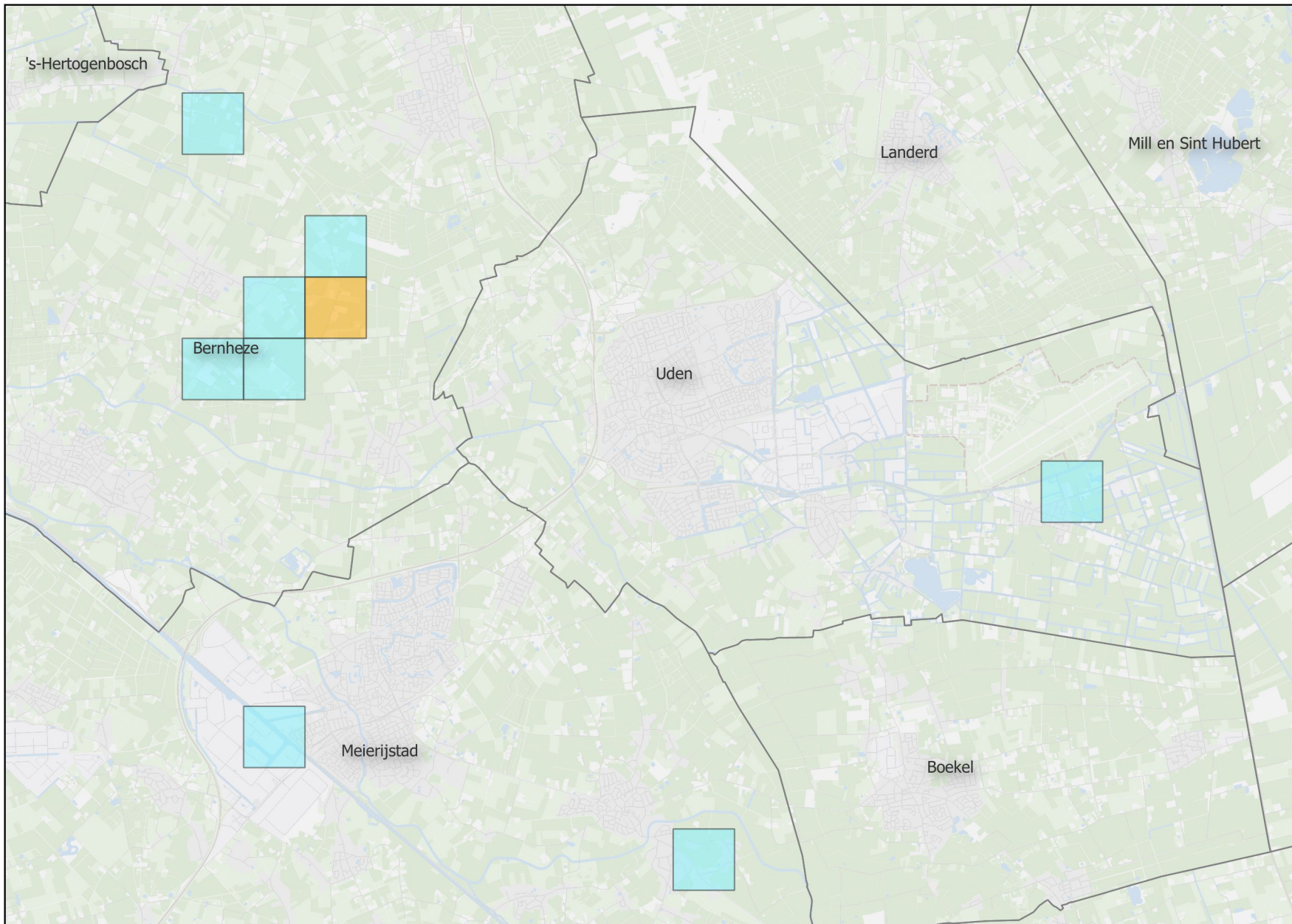
Legenda

- Fijnstof PM10
- ≤ 20,0 µg/m³
 - 20,0 t/m 25,0 µg/m³
 - 25,0 t/m 27,0 µg/m³
 - > 27,0 µg/m³



Alphen-Chaam

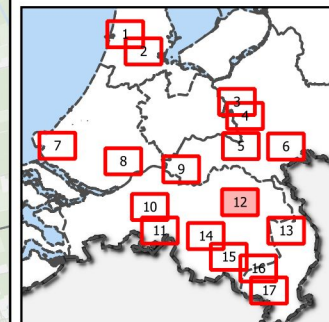
Grootschalige achtergrond concentratie (GCN) fijnstof PM10 in 2021



Legenda

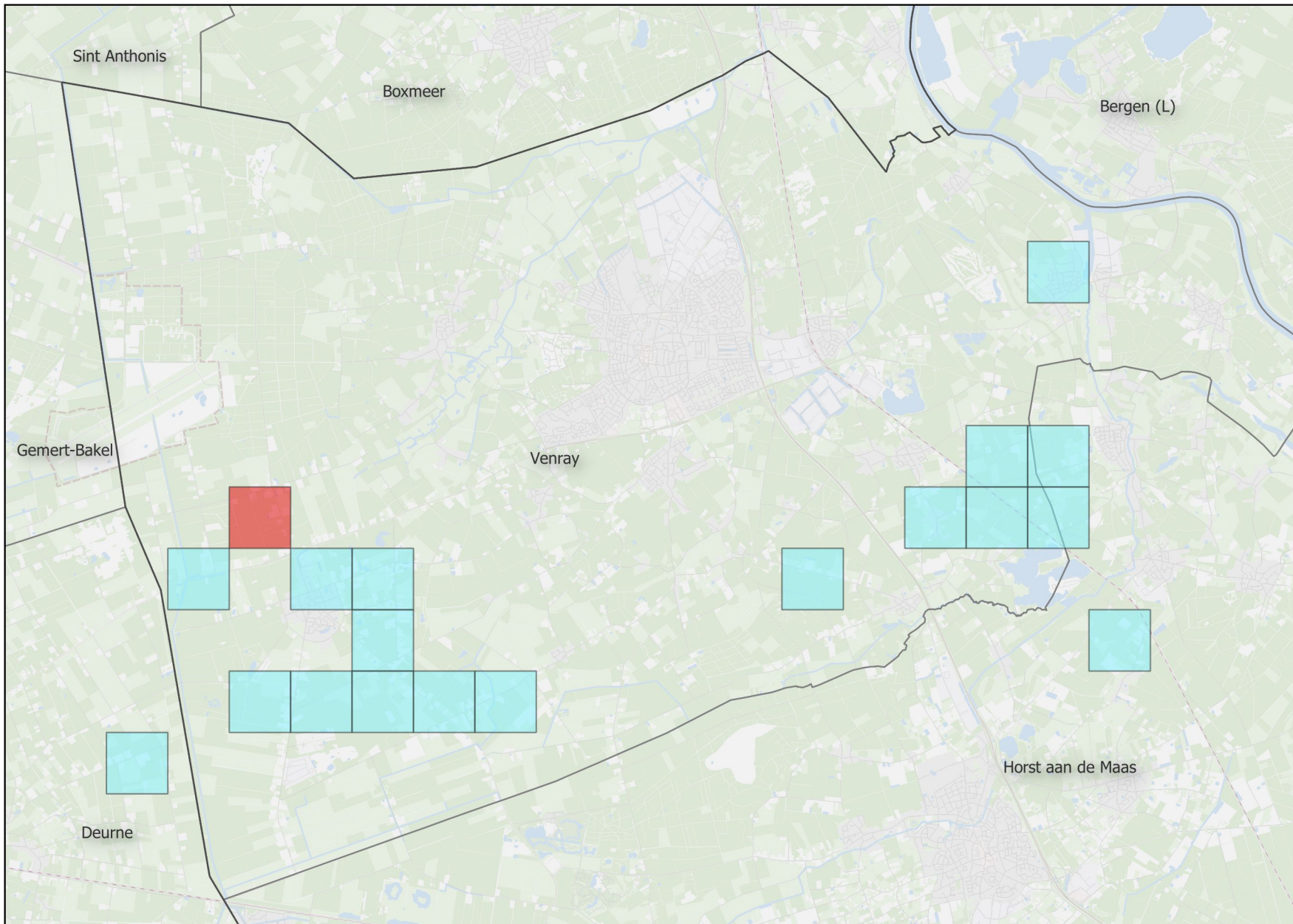
Fijnstof PM10

□	<= 20,0 µg/m ³
□	20,0 t/m 25,0 µg/m ³
□	25,0 t/m 27,0 µg/m ³
■	> 27,0 µg/m ³



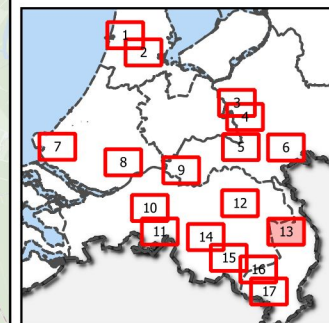
Bernheze, Meierijstad en Maashorst

Grootschalige achtergrond concentratie (GCN) fijnstof PM10 in 2021



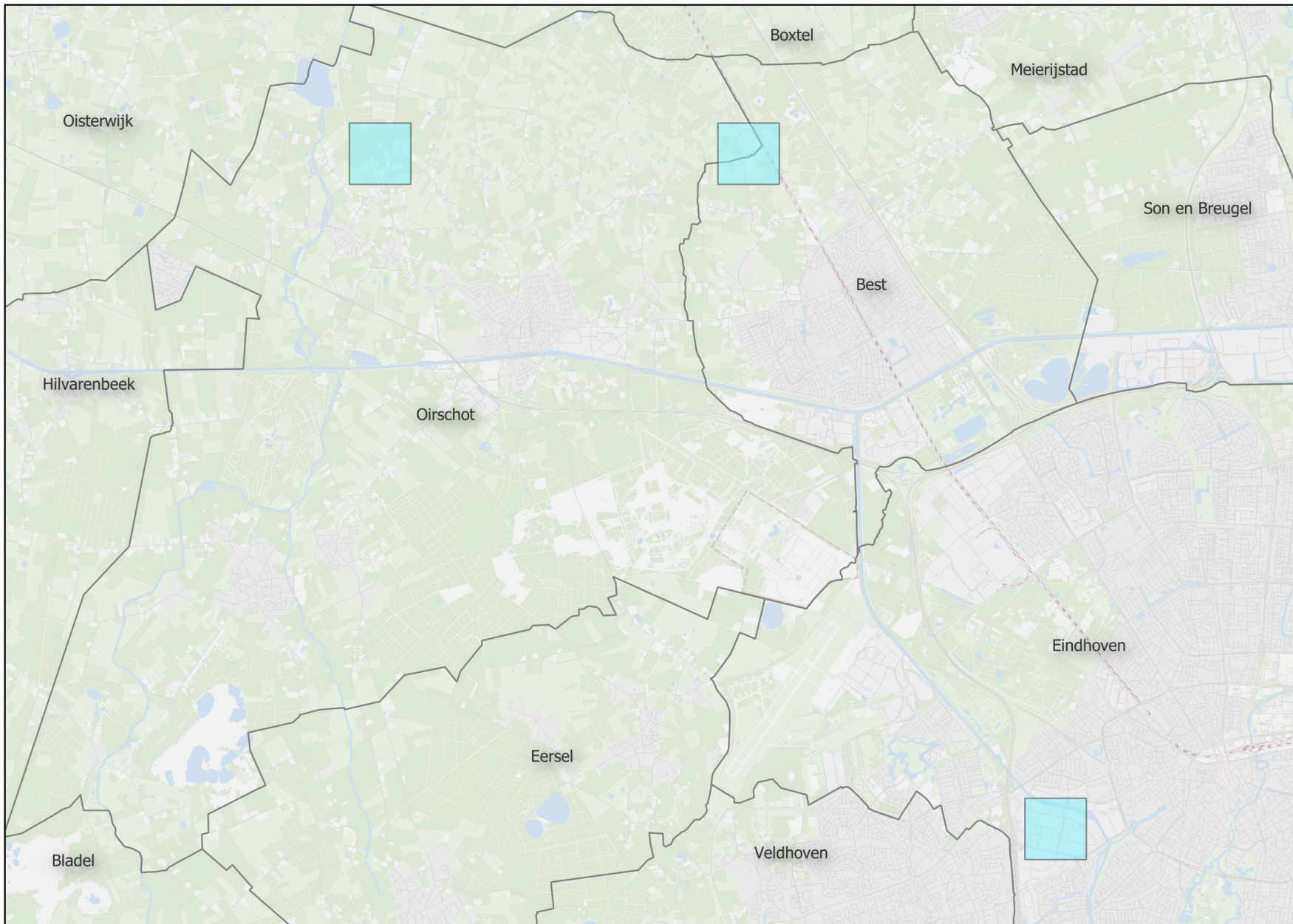
Legenda

- Fijnstof PM10
- <= 20,0 µg/m³
 - > 20,0 t/m 25,0 µg/m³
 - > 25,0 t/m 27,0 µg/m³
 - > 27,0 µg/m³



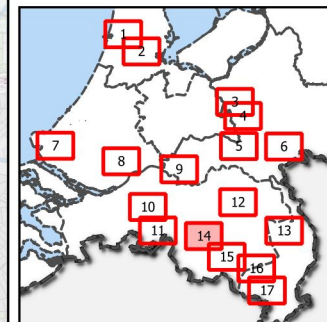
Venray, Deurne en Horst aan de Maas

Grootschalige achtergrond concentratie (GCN) fijnstof PM10 in 2021



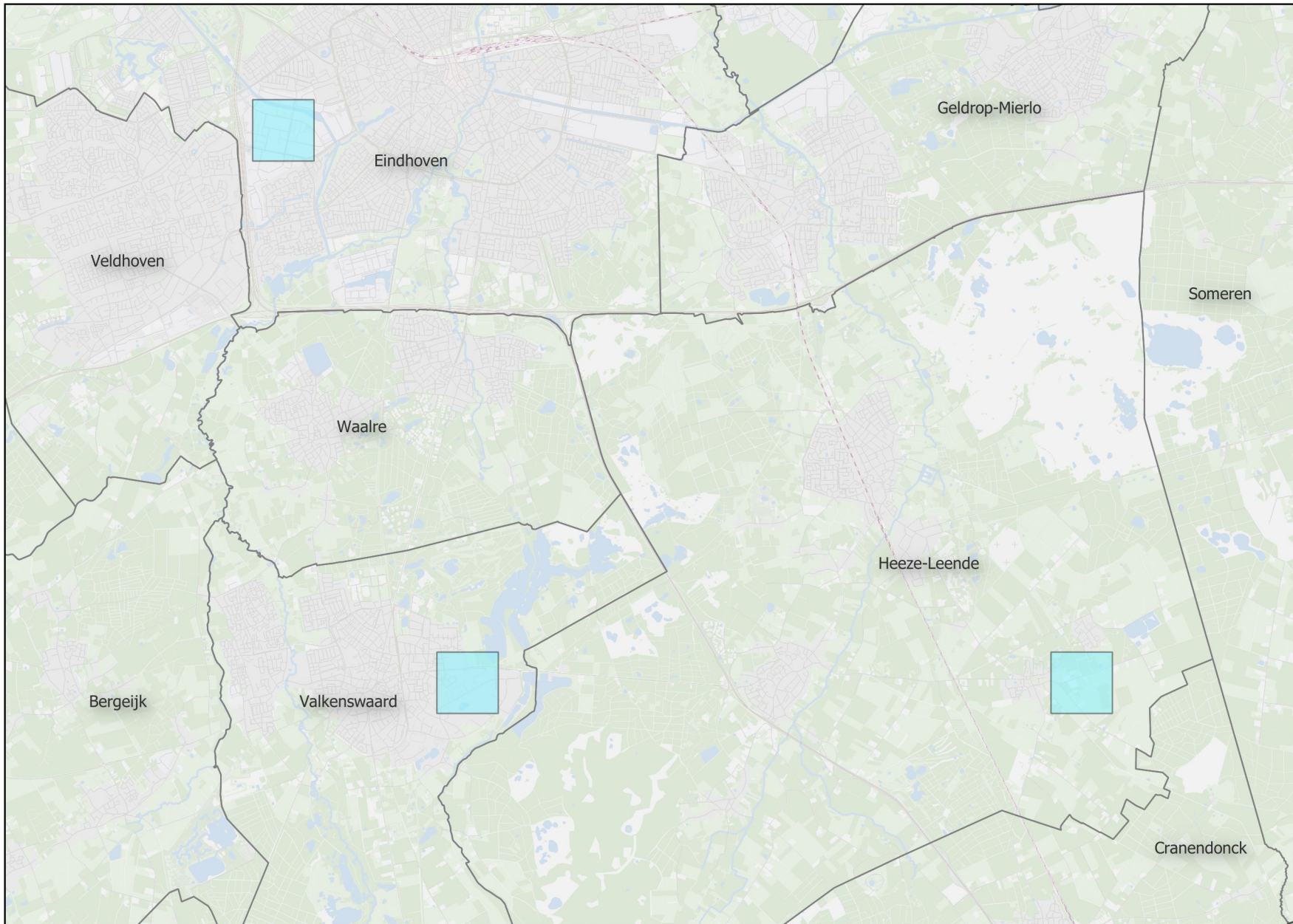
Legenda

- Fijnstof PM10
- ≤ 20,0 µg/m³
 - 20,0 t/m 25,0 µg/m³
 - 25,0 t/m 27,0 µg/m³
 - > 27,0 µg/m³



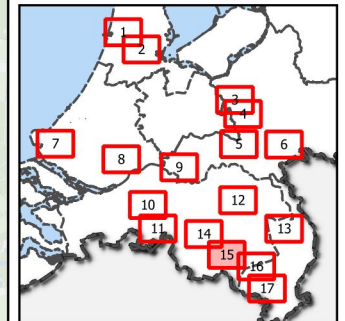
Oirschot, Best en Eindhoven

Grootschalige achtergrond concentratie (GCN) fijnstof PM10 in 2021



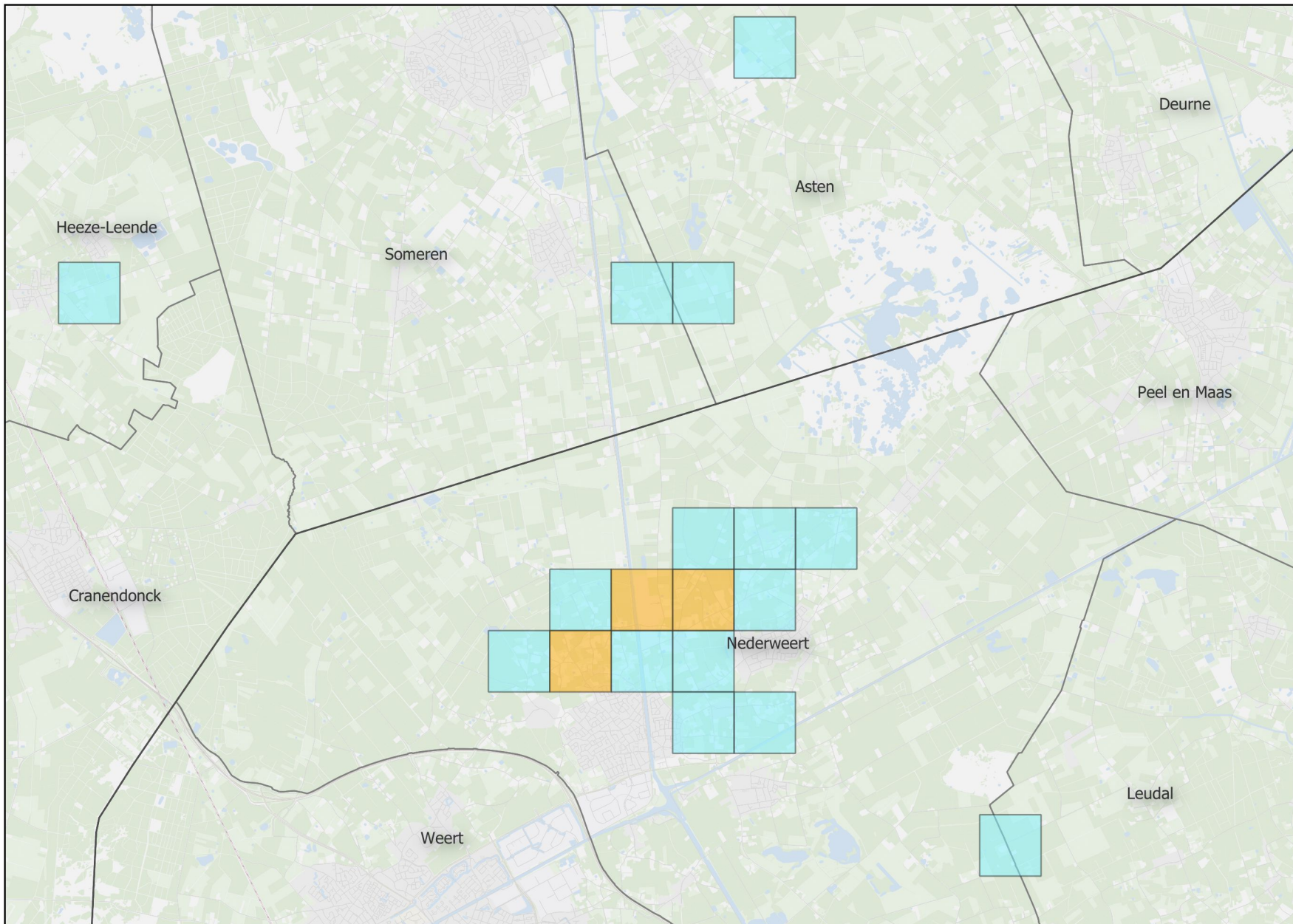
Legenda

- Fijnstof PM10
- ≤ 20,0 µg/m³
 - 20,0 t/m 25,0 µg/m³
 - 25,0 t/m 27,0 µg/m³
 - > 27,0 µg/m³



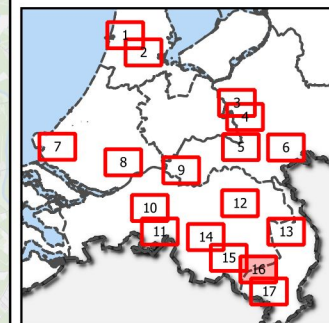
Eindhoven, Valkenswaard en Heeze-Leende

Grootschalige achtergrond concentratie (GCN) fijnstof PM10 in 2021



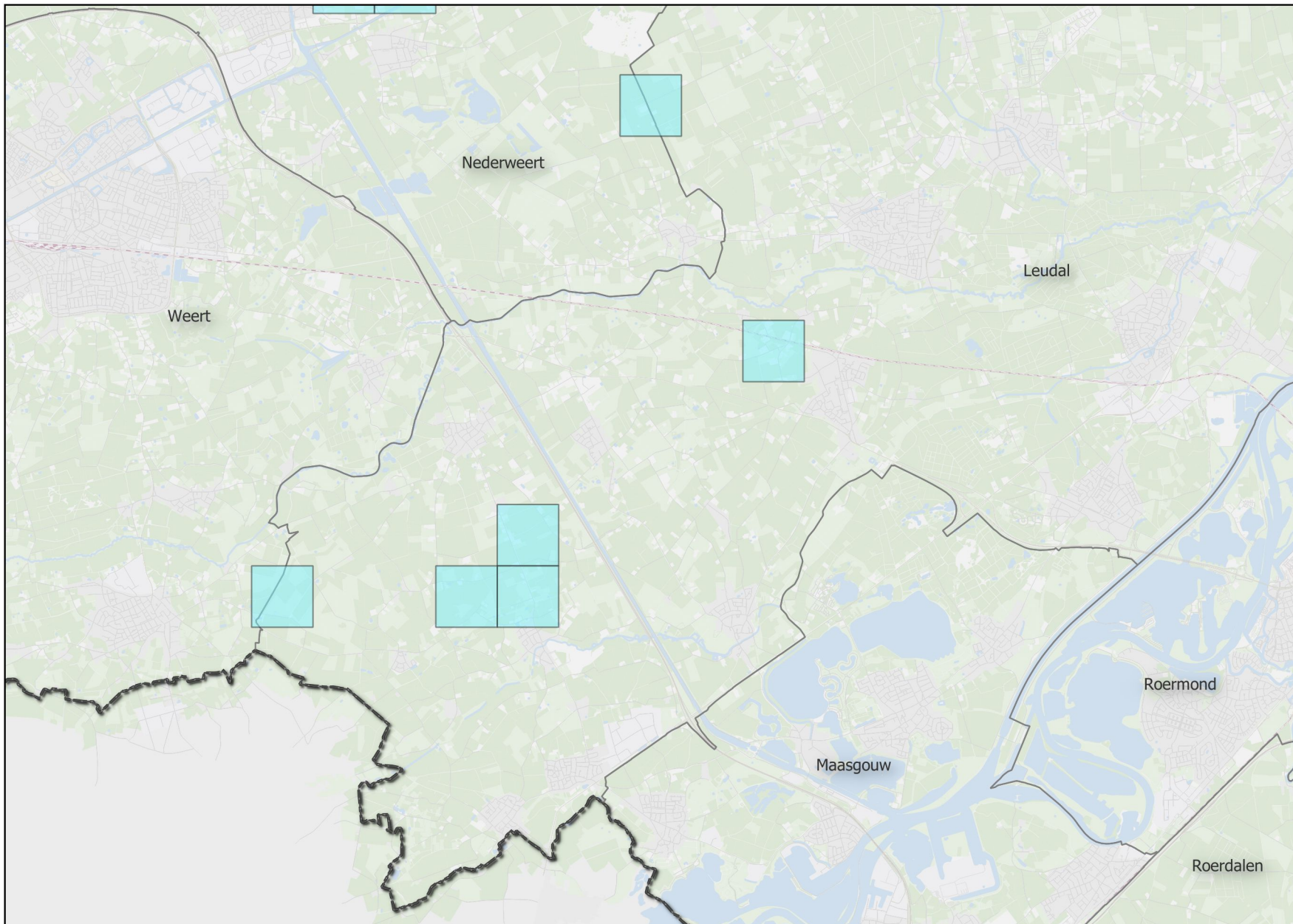
Legenda

- Fijnstof PM10
- $\leq 20,0 \mu\text{g}/\text{m}^3$
 - $20,0 \text{ t}/\text{m}$ $25,0 \mu\text{g}/\text{m}^3$
 - $25,0 \text{ t}/\text{m}$ $27,0 \mu\text{g}/\text{m}^3$
 - $> 27,0 \mu\text{g}/\text{m}^3$



Asten, Someren en Nederweert

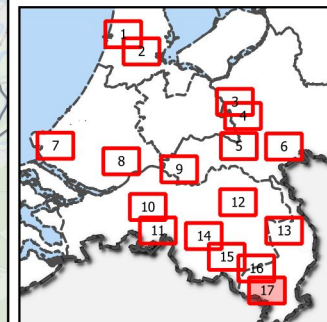
Grootschalige achtergrond concentratie (GCN) fijnstof PM10 in 2021



Legenda

Fijnstof PM10

□	≤ 20,0 µg/m ³
■ (cyan)	20,0 t/m 25,0 µg/m ³
■ (yellow)	25,0 t/m 27,0 µg/m ³
■ (red)	> 27,0 µg/m ³



Leudal en Weert

Grootschalige achtergrond concentratie (GCN) fijnstof PM10 in 2021